



## INCREASE THE CHANCE OF SCORING GRANTS THROUGH A **SUSTAINABLE TRANSFER OF KNOWLEDGE**



Transferring knowledge from research at university medical centres and other research institutes is one of the most essential ingredients of a successful public-private partnership. If you want to increase the chance of scoring on grants, it is important to pay sufficient attention to this.

# WHAT IS A **SUSTAINABLE** **TRANSFER OF KNOWLEDGE?**



Every year, many grants are provided for carrying out a wide range of research within the Health & Life Sciences. The funds and authorities that provide these grants expect the researchers to return the acquired knowledge and insights back to society. When this is designed in such a way that society continues to benefit from the acquired knowledge, one can speak of sustainable transfer of knowledge. One can think of knowledge sharing through education and (public) information. The European Union is one of the largest providers of subsidies for Health & Life Sciences research and distinguishes between three components within a sustainable transfer of knowledge:

- > **EXPLOITATION**
- > **DISSEMINATION**
- > **COMMUNICATION**

There are all kinds of ways to fulfil these components. Such as processing research results into roadmaps, prototypes and software. In this way, gathered knowledge, required skills and valuable data can continue to add value to society.

By monitoring the communication, dissemination and exploitation of research results, the European body ensures the proper use of the subsidised funds. Knowledge transfer is thus an essential element in the allocation of funding.

## Capacity Building Partnerships

In addition to the sustainable character of the transfer of knowledge, capacity building partnerships - capacity building through collaborations with partners - are also important to grantmakers.

These are partnerships that promote the development of knowledge, commitment, skills, awareness and mutual understanding. Capacity building can also lead to modernisation, internationalisation and making knowledge accessible to third parties, as well as intensifying cooperation with the EU.

In disseminating scientific knowledge, use is made of, for example, webinars, workshops, train-the-trainer programmes, communication strategy, websites and Hub knowledge platforms, e-learning and other knowledge products. Products and services where Elevate can support and facilitate.

### Improving Indonesian **research capacity** a capacity building partnership by Elevate

This blended program equips a new generation of selected young researchers in Indonesia with the knowledge and skills to conduct research and make well-informed healthcare decisions. To strengthen research capacity in four participating Indonesian universities in a sustainable manner, the program aims to establish an infrastructure of online education development in Indonesia.

[Learn more >](#)



# WHY SUSTAINABLE TRANSFER OF KNOWLEDGE IS IMPORTANT

The value of sustainable transfer of knowledge has been proven more than once. This also applies to IMI GetReal, a project funded by the Innovative Medicine Initiative. This research aims to show how new methods of real-world evidence (RWE) can be integrated earlier into pharmaceutical research and the decision-making process in healthcare. This way, the gap between what is known about a new drug at its introduction and its effects in practice can be narrowed.



Within this consortium, Elevate was responsible for the transfer of knowledge. One of the deliverables was an online course for researchers, decision makers in healthcare and social stakeholders in the public and private sector to increase the knowledge on different aspects of RWE. As official e-learning provider Elevate developed this online course, called 'RealWorld Evidence in Medicine Development'. A course that is still offered today in cooperation with Get Real Institute. The fact that this also happens after the project lifetime, makes it a sustainable solution.

Sustainable transfer of knowledge also played a significant role in the recent submission of a new project proposal with Ttopstart and other academic consortium partners.

## Jelle Eikelhof - Ttopstart

Elevate is one of the main consortium partners in the recently submitted ONCOVALUE Horizon Europe project proposal and has played an integral role in setting up the educational elements of this ambitious project. Throughout the project, Elevate will be primarily responsible for the development of online training activities and guidelines to educate and train both clinicians and HTA experts in the management of real world data. These activities are a fundamental part of achieving the project's goal of creating an AI-based framework for real-time assessment of the effectiveness of new cancer therapies in practice.



**The aim of the project is the implementation of value-based oncology in European hospitals.**

Overall, Elevate's active participation in the preparation of the proposal, combined with both their expertise in the field of education and their experience in publicly funded pan-European cooperation projects, makes their integration into the consortium one of the unique strengths of the ONCOVALUE proposal.

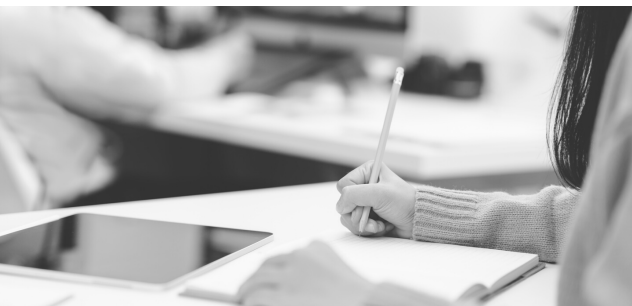


# HOW TO INCREASE THE CHANCES OF SCORING GRANTS

For many academic medical centres and research institutes, transferring the acquired knowledge is a time-consuming and complex task. However, in order to significantly increase the chance of winning grants, it is very important to pay sufficient attention to this. You have to think about a way to really make an impact with the transfer of knowledge.



You also have to consider the communication of the research and the results. You want to reach citizens, media and possible investors through the right channels to create broader support for the research, attract the best experts, generate market demand, create awareness of how public money is spent and show the success of European cooperation.



For dissemination purposes, the research results are translated into accessible information, tailored to the target group. In many cases, this extends beyond healthcare professionals. Think of authorities, industry, policy makers, interest sectors and civil society.

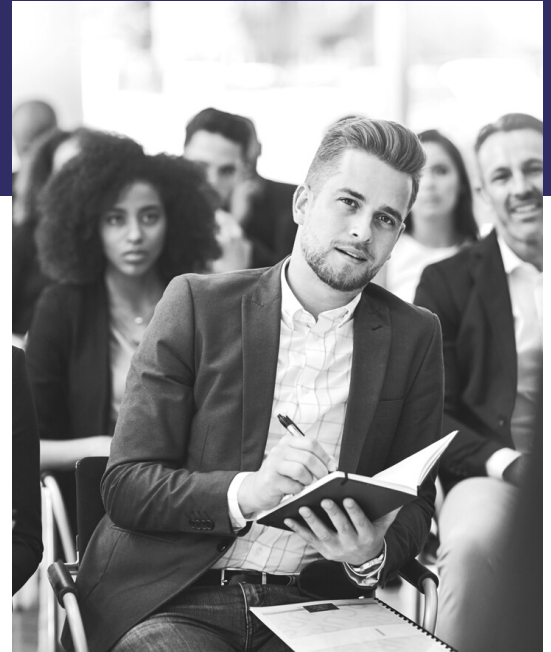
By offering effective, innovative and complete learning solutions, the chances of getting a grant are significantly increased. Proven successful deliverables in the area of training & dissemination for public-private partnerships are, for example:

- > **Digital knowledge platform (Knowledge Hub) for sharing knowledge, both internally and externally.**
- > **Online and blended training tailored to target group and level**
- > **Train-the-trainer programs**
- > **Webinars**
- > **Workshops**
- > **Communication strategy plan**
- > **Sustainable business plan**

In order to achieve sufficient clout in research, the communication, dissemination and utilisation of research results during and after a research project is regularly outsourced. The transfer of knowledge is simply too important to be considered a side activity next to research. Elevate has extensive knowledge and expertise in the field of sustainable knowledge transfer through online and blended learning solutions. By offering effective, innovative and complete learning solutions, such as the development of Knowledge Hubs, e-learning and blended training, the chances of getting a grant are significantly increased. Working together with scale-ups such as Elevate has an additional advantage: in specific cases cooperation with SMEs is a hard requirement for obtaining European subsidies.

# TAILOR-MADE WORK BY ELEVATE

Curious about the possible implementation of sustainable transfer of knowledge in your grant application? Elevate is happy to help. As education specialists with years of experience in Health & Life Sciences, we understand the challenges you face as a researcher when setting up new and innovative education and communication programmes.



We deliver customised solutions for a variety of consortia, budgets and purposes. From the design of compact e-learning to long-term cooperation in the design and development of full-fledged training curricula.

## Hine van Os

**Managing Director of the National eHealth Living Lab (NeLL)**

We are collaborating with Elevate and other strong European partners in the DTx PAVE consortium, which will create accredited courses on digital therapeutics for healthcare professionals. We believe in anchoring digital health education across Europe to achieve a meaningful transformation of healthcare. To apply for EIT Health funding we were looking for a reliable, experienced, innovative and flexible education partner, Elevate meets all these requirements.